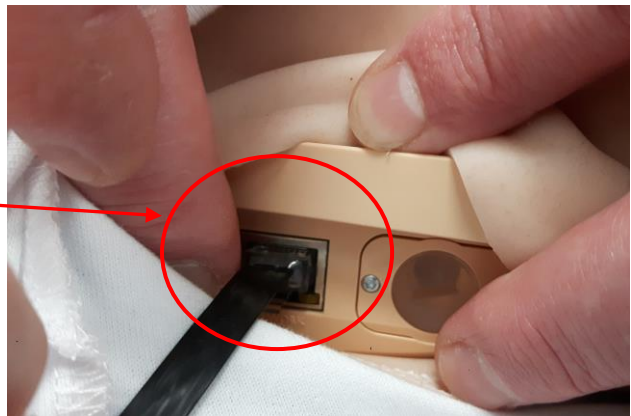


SimBaby equipment set up

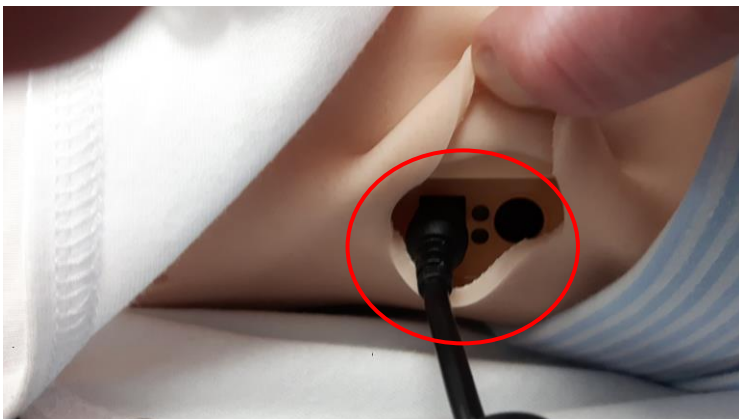
1. Remove couch from cupboard 7B and put in centre of the classroom area near the floor panel.
2. Open the Trolley Locker (cupboard 14) and remove SimBaby and SimBaby's plastic accessories box containing SimBaby's power and LAN cables from middle shelf and place on the couch.



3. Remove SimBaby's power cable and LAN cables (with connector) from plastic box. Attach the LAN to the Ethernet Port located on the right hand side of the manikin below right arm as shown.



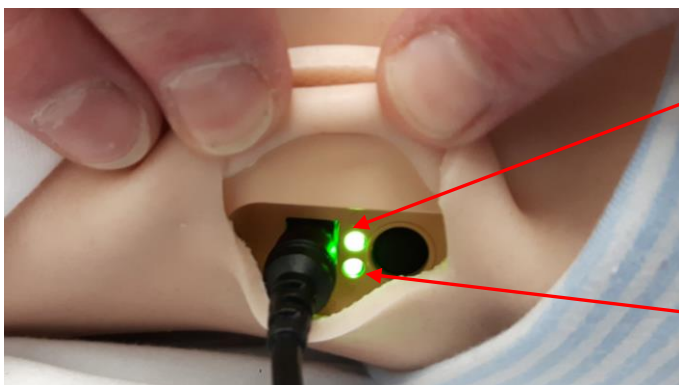
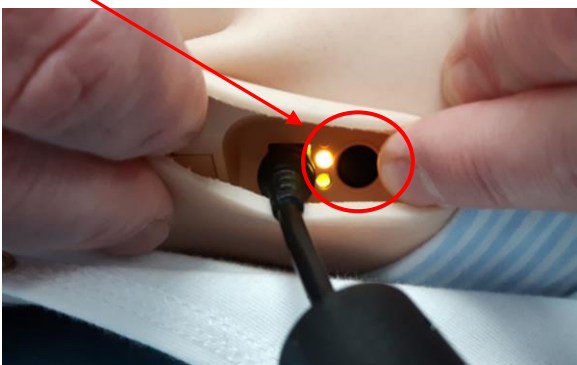
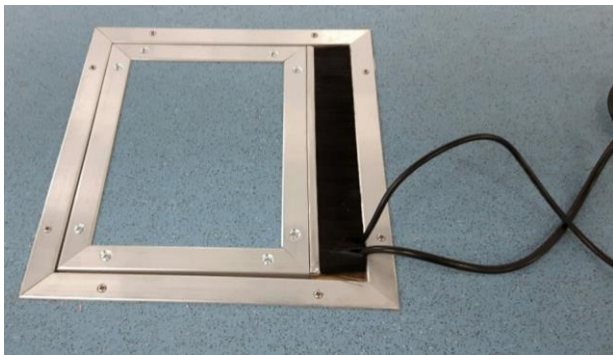
4. Attach the power cable to the Power Panel located on the right hand side of the manikin near the waist as shown.



5. Open floor panel and plug in SimBaby's power cable and LAN cable to relevant sockets, switch on power.



6. Replace floor panel with wires protruding. Turn on SimBaby. After approximately 30 seconds SimBaby will cough, blink and the chest will rise.



7. Power indicator turns green when on

8. WiFi/LAN indicator turns blue when connected

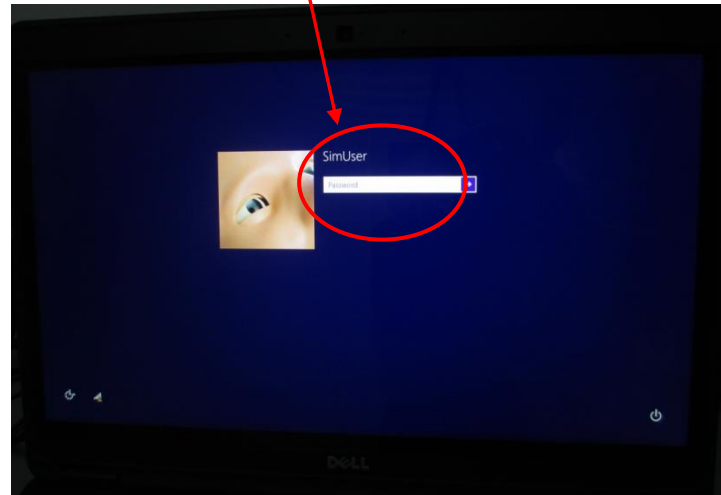
9. Go to the Control Room to switch on Instructor PC (Laptop).

Instructor PC (Laptop) in the Control Room

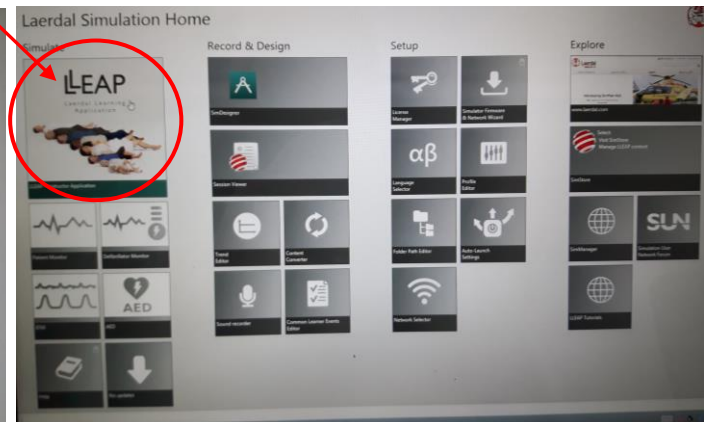
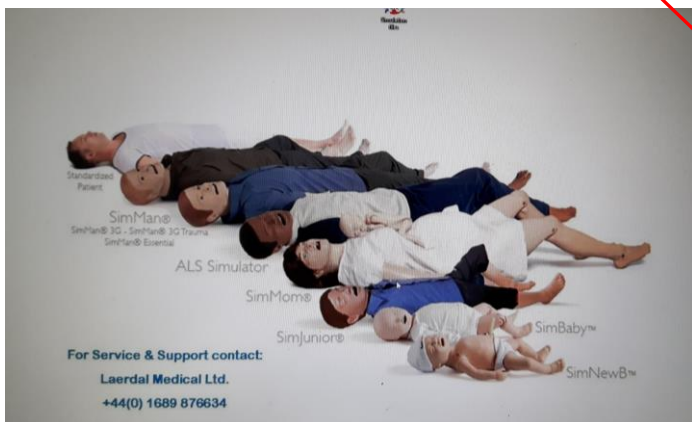
1. Switch on Instructor PC (laptop) by pressing power button on right hand side of keyboard.



2. Swipe screen up and enter password which is same as username (SimUser) and is case sensitive.

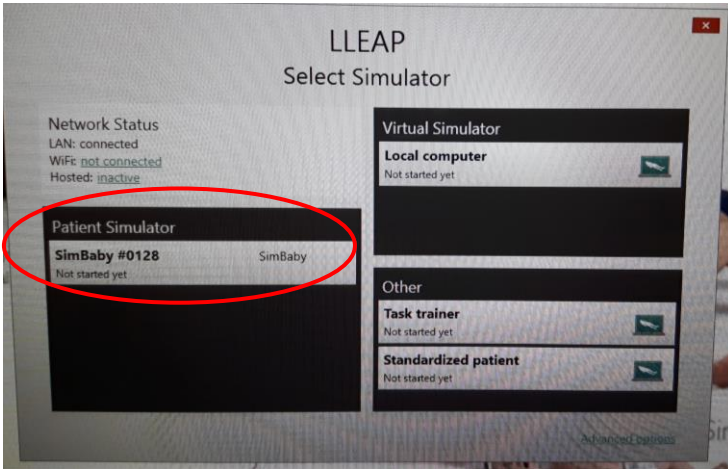


3. After a few seconds an image of all the manikins will appear. Laerdal Simulation Home screen will then appear, select LLEAP Instructor Application.

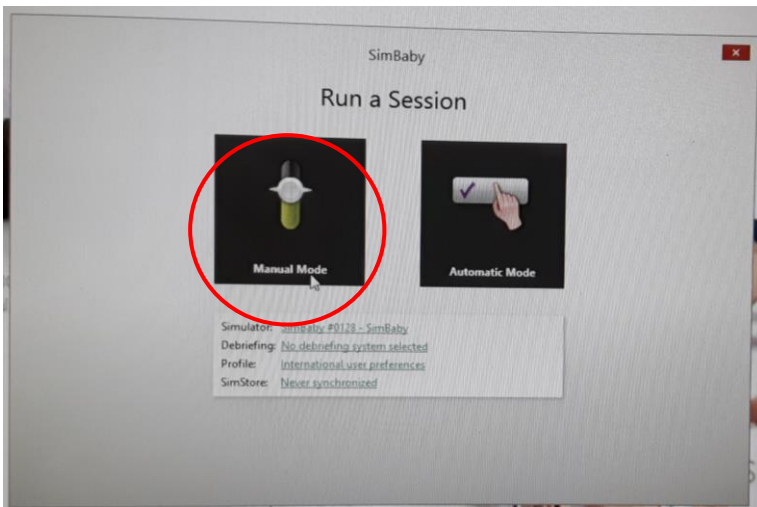


Instructor PC (Laptop) in the Control Room

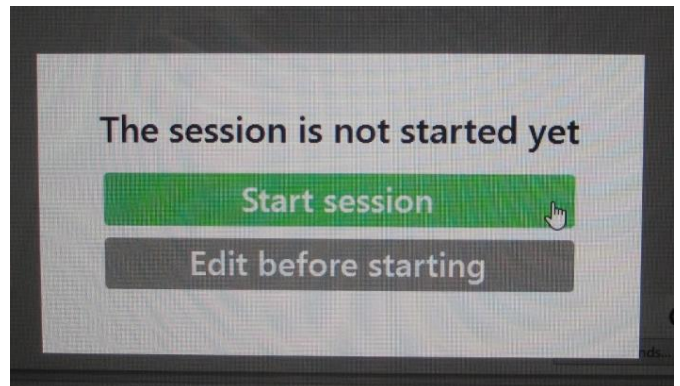
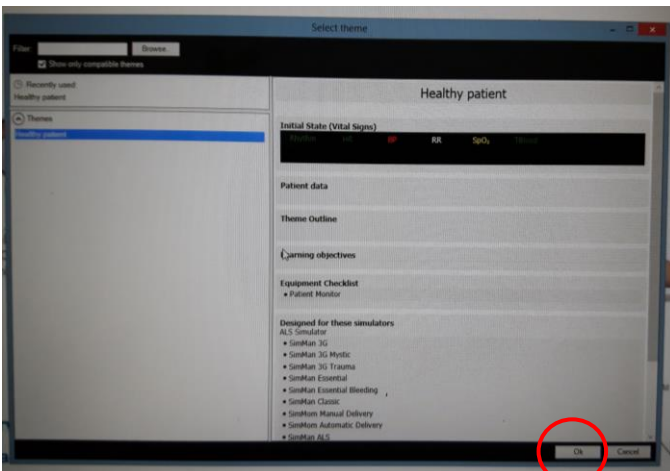
4. Select SimBaby in "Patient Simulator" panel. (If SimBaby was the previous manikin selected this screen might not appear)



5. "Run a Session" box will appear select "Manual Mode".

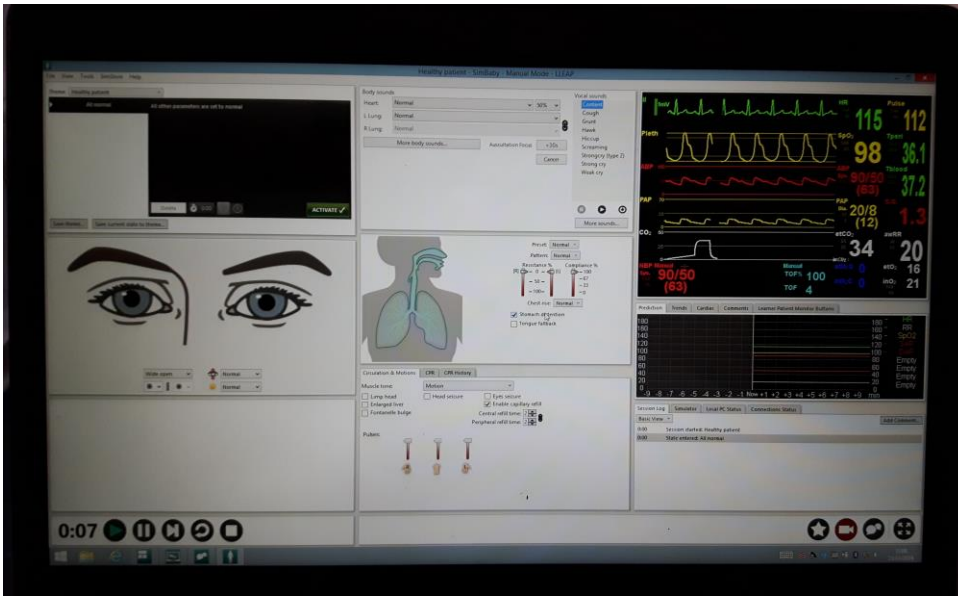


6. "Select Theme" box will appear click OK for healthy patient, click Start Session to begin simulation programme.



Instructor PC (Laptop) in the Control Room

7. View of LLEAP programme running.



8. Once the session begins SimBaby will start to move her arms. Return to Classroom to set up Patient Monitor

Patient Monitor Set Up

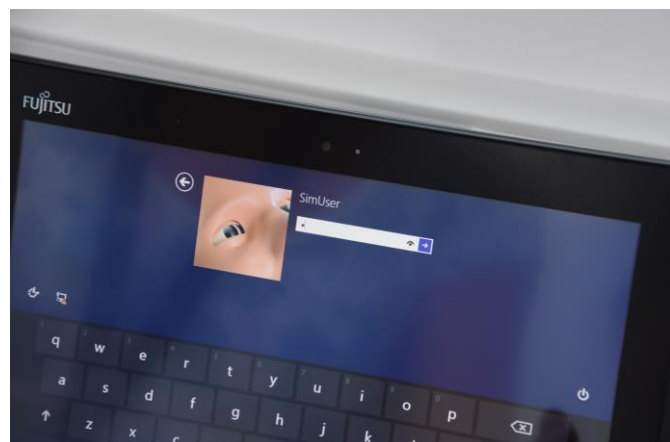
1. Remove the Patient Monitor tablet box from the bottom shelf in the Trolley Locker (cupboard 14). Place the docking station next to a power socket and LAN socket in classroom area. Plug in power and LAN cables switch on socket.



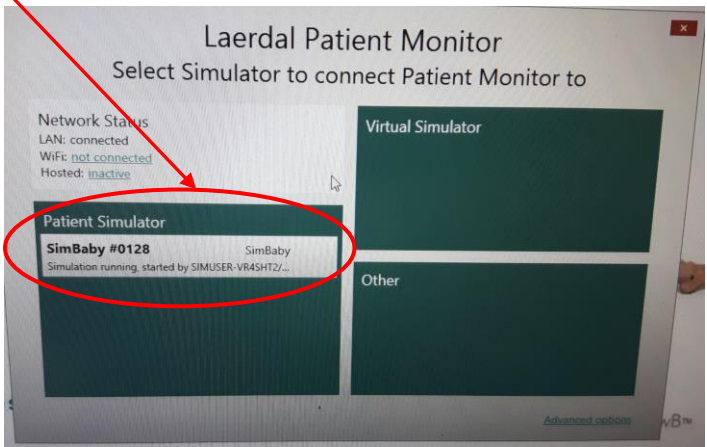
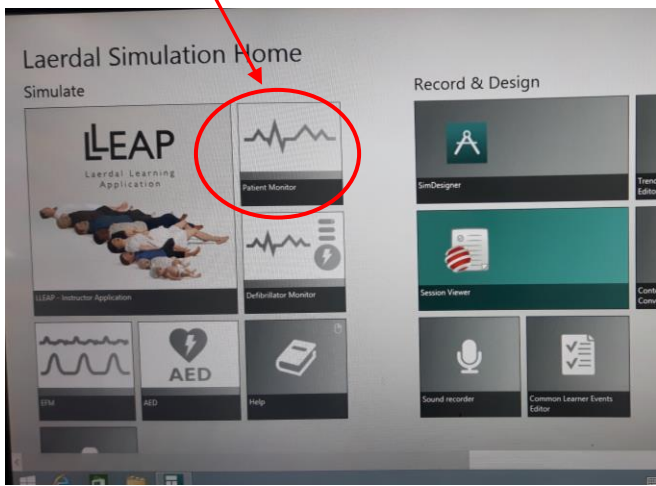
2. Attach tablet to the docking station and turn on tablet by sliding the power switch up (located on lower right hand side).



3. Swipe screen up. Enter the password which is same as username (SimUser) and is case sensitive.



- An image of all the manikins will appear briefly then the Laerdal Simulation Home screen, select the Patient Monitor box. Click on "SimBaby" to connect to the patient monitor.



- The patient monitor will load after a couple of seconds. Touch each parameter to activate it.



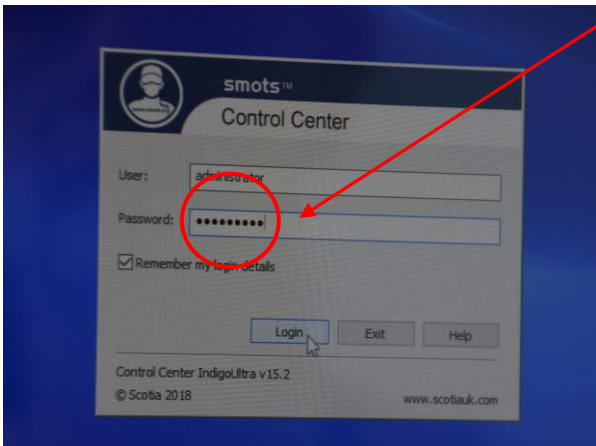
SimBaby set up with Patient Monitor and Kwickscreen in background

Switching on the smots™ video

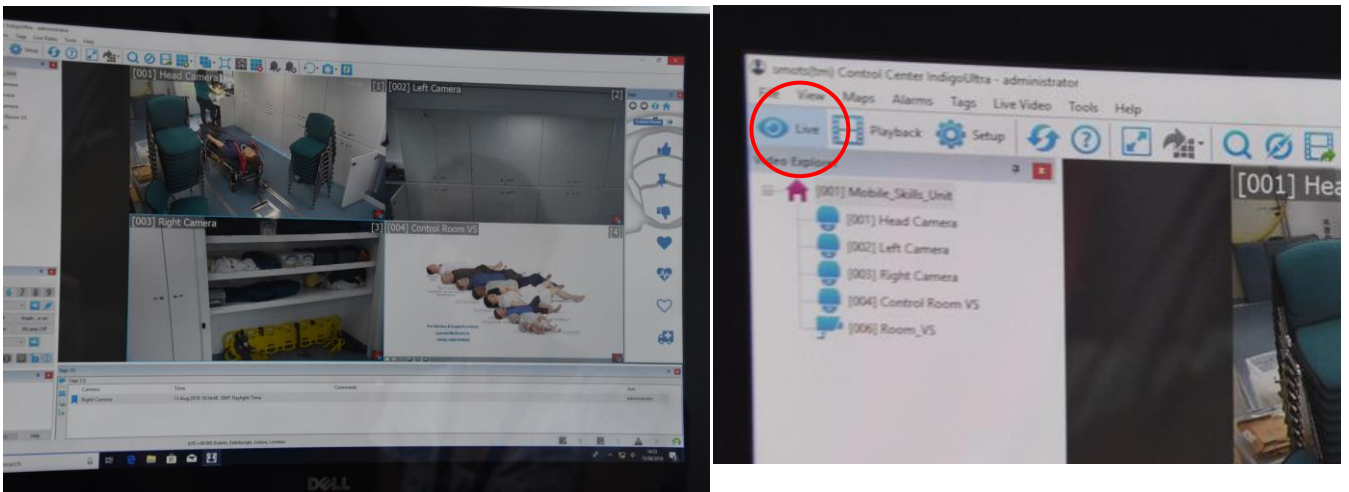
1. Switch on smots computer (right hand monitor) in Control room, the on button is located on right side of smots monitor. Double click on the smots™ icon located on the left of the screen



2. At the password screen enter in the password all in lowercase **smotsuser**

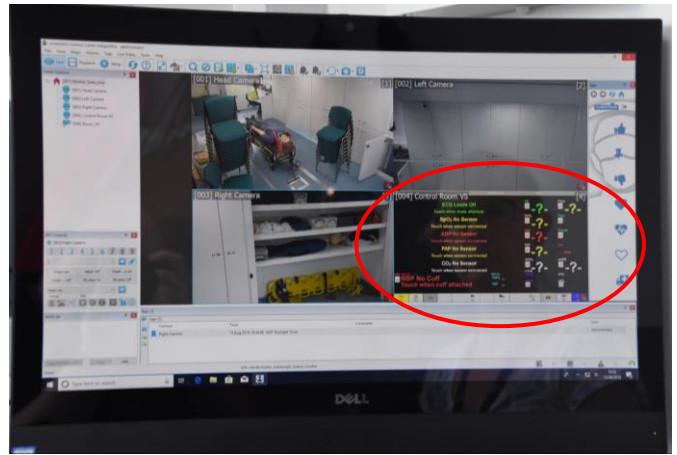
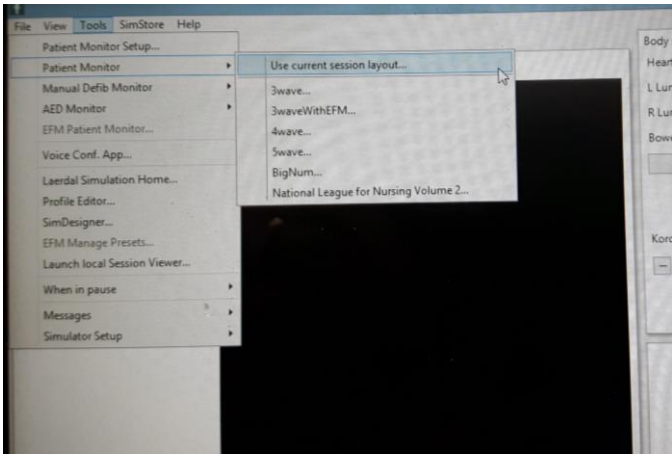


3. On the resulting screen click on the tab that shows **live video** feed (on the far left hand side at the top) and the 3 cameras should be seen and working. If the cameras are not displaying live video, click and drag the cameras across to the right.

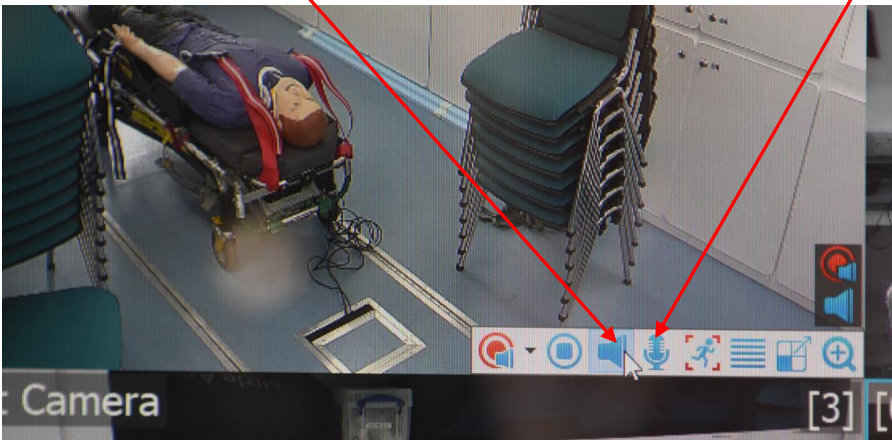


Switching on the smots™ video

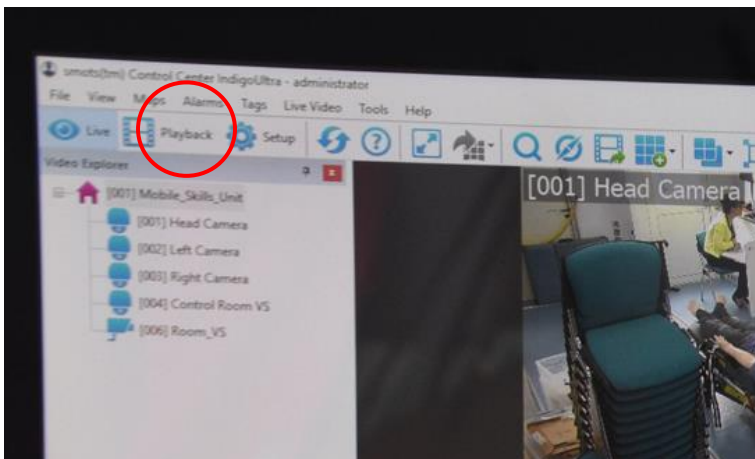
4. To ensure the Patient Monitor appears on smots go back to the Instructor PC. Click on “Tools”, select “Patient Monitor”, then select relevant layout. The vital signs will now appear on the smots screen.



5. To listen to the session in classroom put head set on, click in either the Head camera or Left camera panel and click the Audio Icon. To speak to classroom click the Microphone icon and push button on mic on desk to speak.



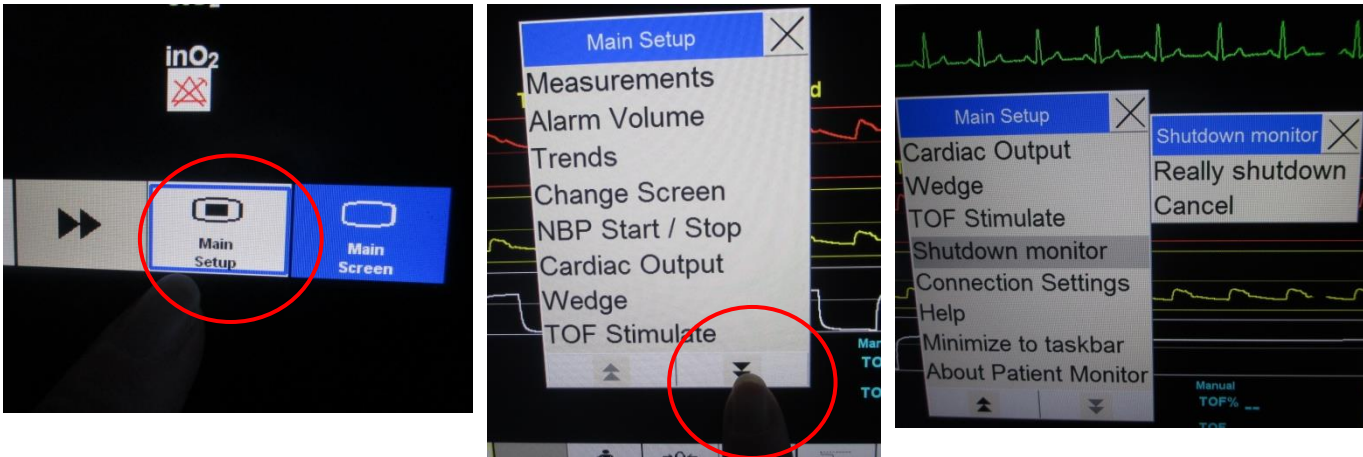
6. To view the recorded footage on smots, select “Playback” at the top left of the screen next to “Live” and click and drag the cameras across to the right.



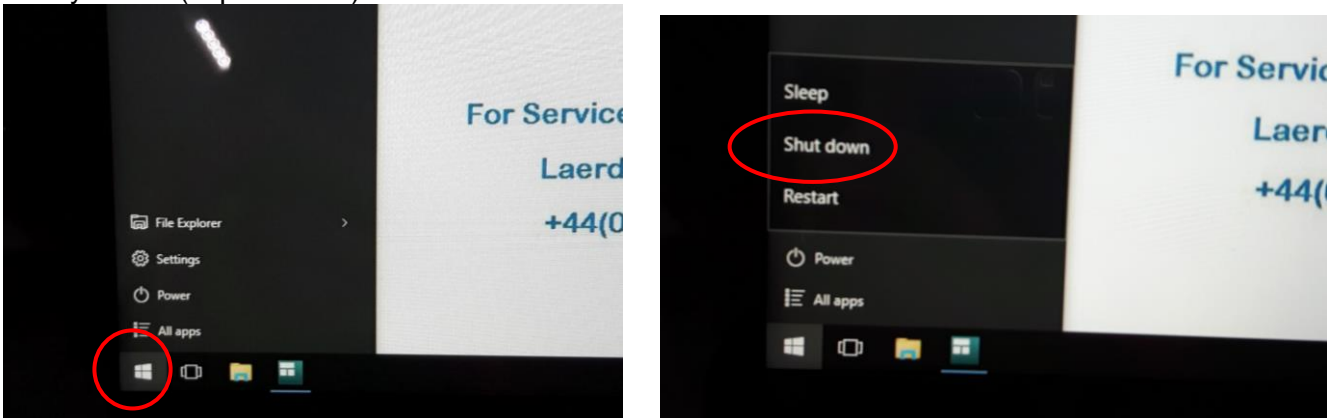
Closing down SimBaby

Once you are finished with SimBaby, firstly close down the Patient Monitor, then the Instructor PC and finally turn off SimBaby.

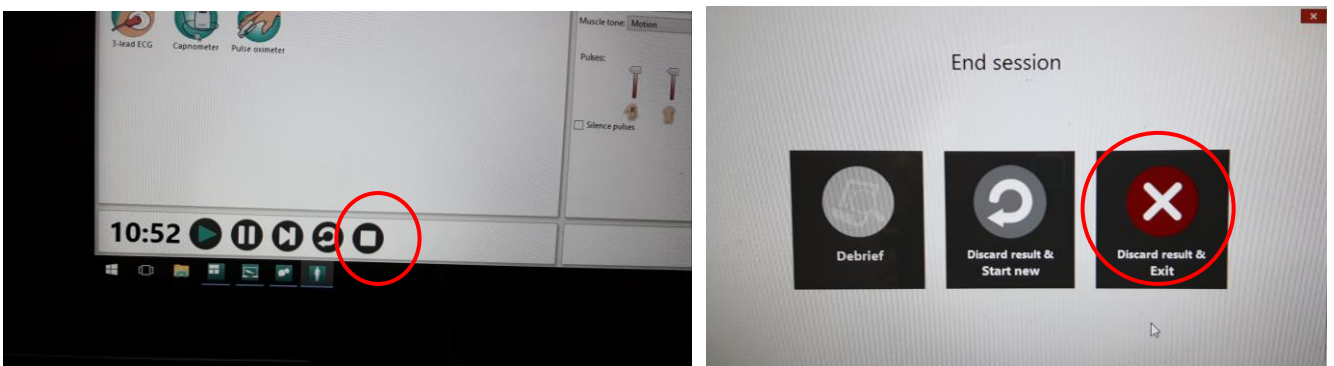
1. To turn off Patient Monitor, click Main Setup on bottom right of the screen. Click downward arrows to scroll down the list. Select Shutdown monitor then Really Shutdown.



2. Select Windows icon on bottom left hand side of screen, press Power and select Shut Down. Unplug tablet and put in protective case and place in plastic box along with docking station, power and LAN cables. Please DO NOT put docking station or power cable on top of tablet. Put box on bottom shelf in trolley locker (cupboard 14).

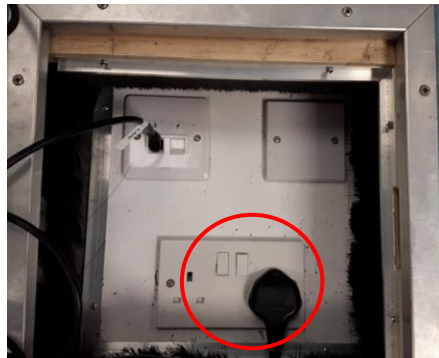
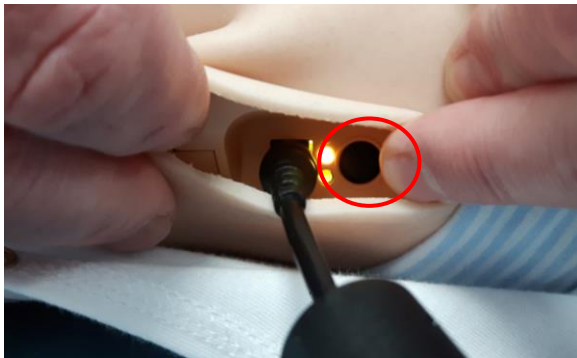


3. Turn off Instructor PC in control room by clicking End Session button on tool bar. Choose "Discard Result and EXIT" then "Exit LLEAP only". Shutdown ALL programmes open on the tool bar before shutting down tablet by right clicking on icons and selecting close window. Select Windows icon on bottom left hand side of screen, press Power and select Shut Down.

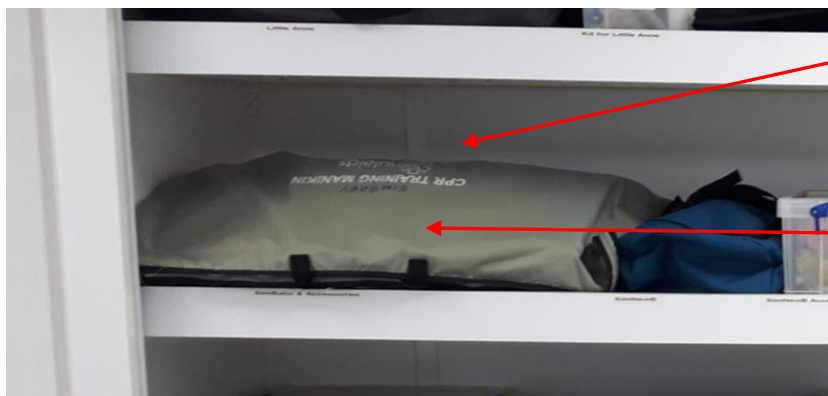


Closing down SimBaby

4. Switch off SimBaby by pressing the power button once. Turn off power socket in the floor panel.



5. Disconnect power and LAN cables from the manikin and from floor panel put in SimBaby's plastic accessories box and return to the middle shelf in the Trolley Locker (cupboard 14). Wrap SimBaby in blanket and put back in grey bag, place on middle shelf in Trolley Locker (cupboard 14).



SimBaby's
Accessories box
behind manikin

SimBaby



Patient Monitor

****Please ensure the SimBaby manikin is cleaned and free from sticky residue before returning to blue bag. Clinell Wipes can be found in cupboard 8 (beside the sink) and for stubborn stains please use the Zoff wipes located in cupboard 8.**