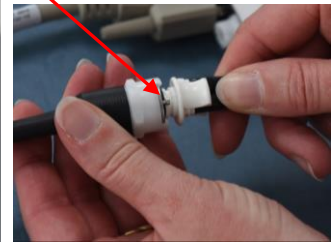
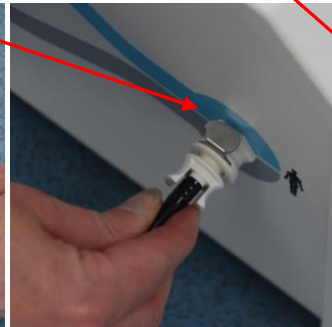


SimNewB equipment set up

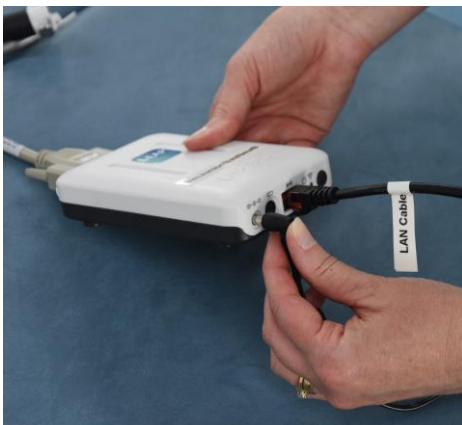
1. Remove couch from cupboard 7B and put in centre of the classroom area near the floor panel.
2. Open Trolley Locker (cupboard 14) and remove SimNewB (in blue bag) from the middle shelf and the plastic box containing Link Box, power and LAN cables from bottom shelf and place on the couch.



3. Remove Compressor and cables from Cupboard 11B and place beside couch. Connect power cable and compressor cable to the Compressor and the compressor cable to SimNewB.

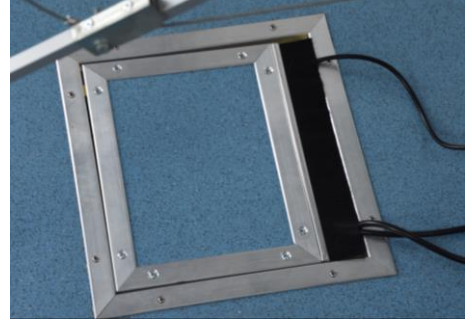


4. Connect Link box to SimNewB's VGA cable, connect power cable and LAN cable to Link box.

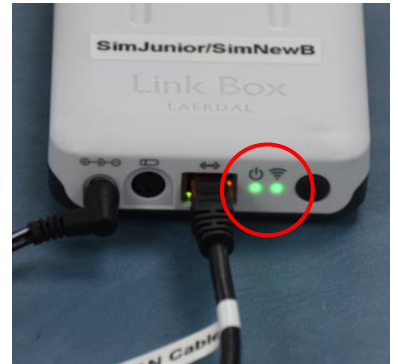
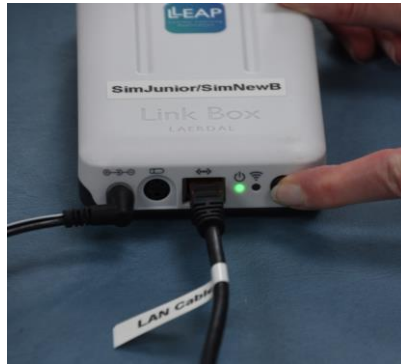


SimNewB equipment set up

5. Open the floor panel and plug in Compressor power cable, the Link box power and LAN cables to relevant floor sockets and switch on. Replace floor panel with wires protruding



6. Switch on the Compressor. Switch on SimNewB's Link Box, green light will flash for about 20 seconds, SimNewB will "cough" and 2nd green light will come on.

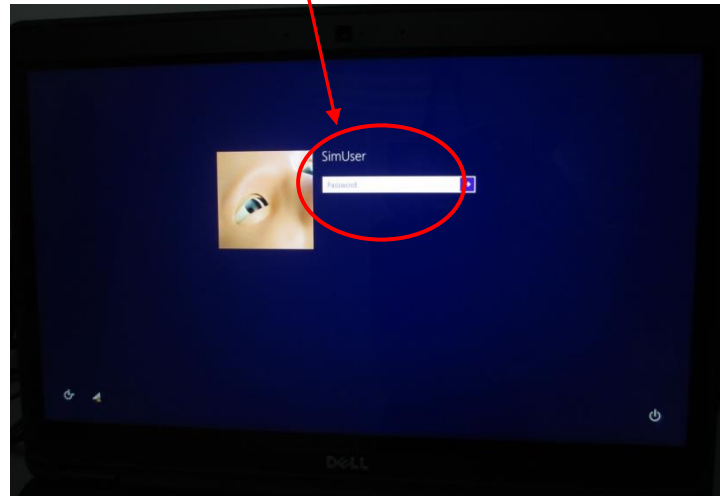


Instructor PC (Laptop) in the Control Room

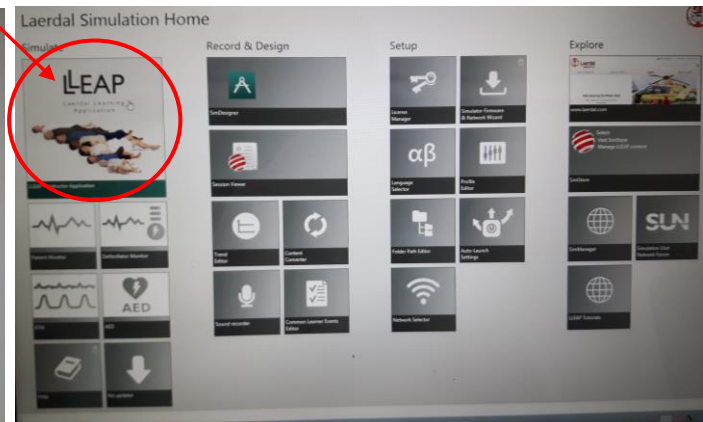
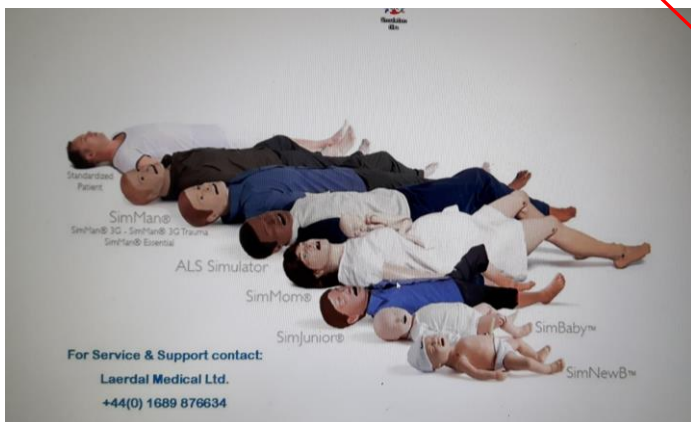
1. Switch on Instructor PC (laptop) by pressing power button on right hand side of keyboard.



2. Swipe screen up and enter password which is same as username (SimUser) and is case sensitive.

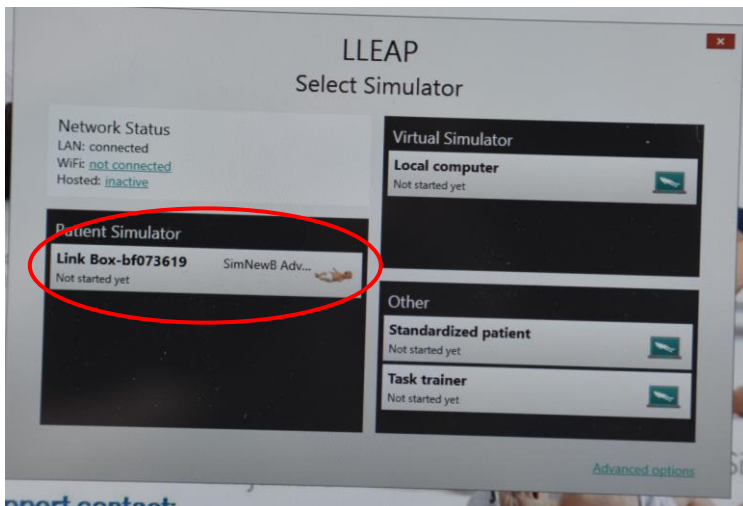


3. After a few seconds an image of all the manikins will appear. Laerdal Simulation Home screen will then appear, select LLEAP Instructor Application.

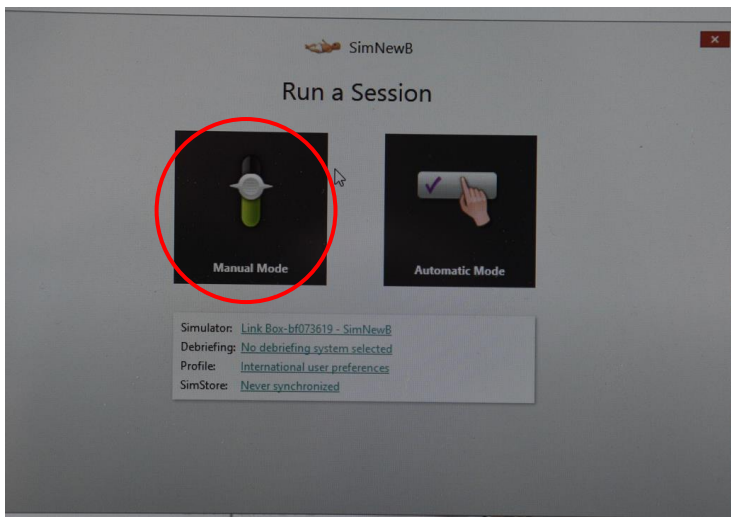


Instructor PC (Laptop) in the Control Room

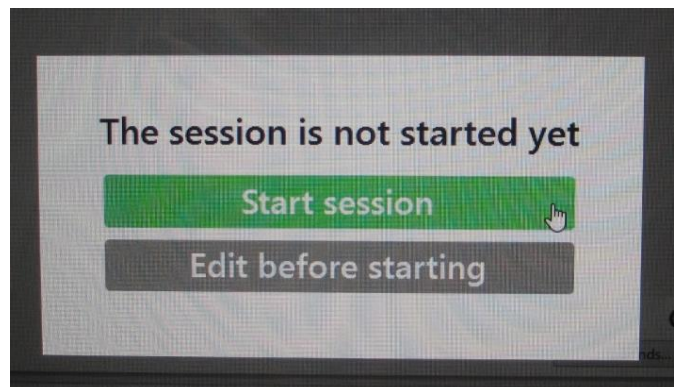
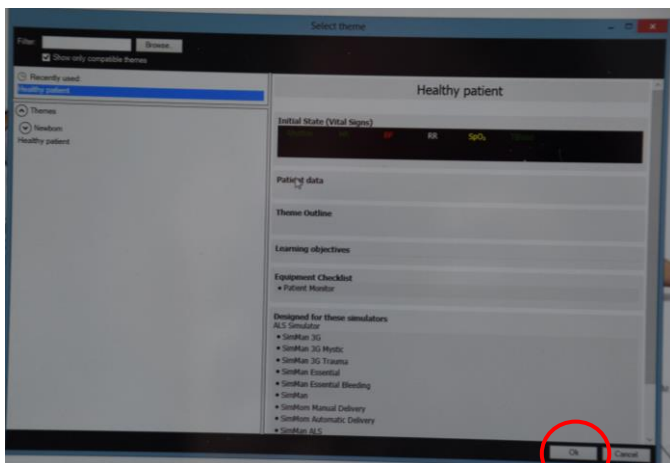
4. Select SimNewB in "Patient Simulator" panel. (If SimNewB was the previous manikin selected this screen might not appear)



5. "Run a Session" box will appear select "Manual Mode".



6. "Select Theme" box will appear click OK for healthy patient, click Start Session to begin simulation programme.



Instructor PC (Laptop) in the Control Room

7. View of LLEAP programme running.



8. Return to Classroom to set up Patient Monitor.

Patient Monitor Set Up

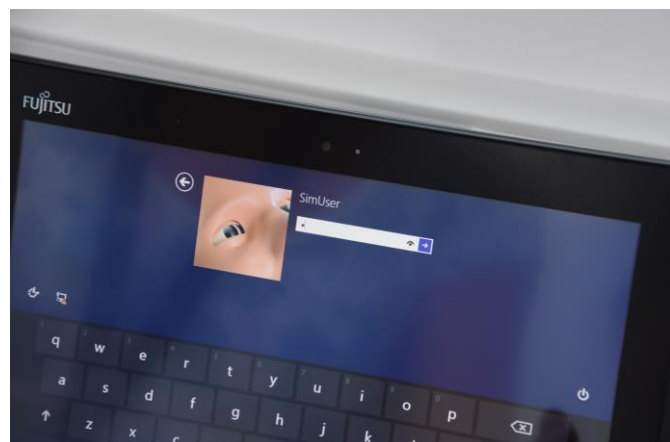
1. Remove the Patient Monitor tablet box from the bottom shelf in the Trolley Locker (cupboard 14). Place the docking station next to a power socket and LAN socket in classroom area. Plug in power and LAN cables switch on socket.



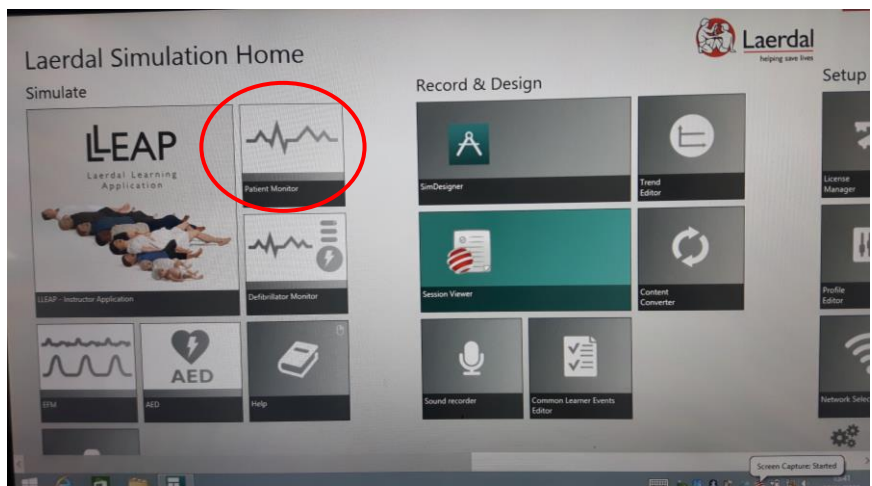
2. Attach tablet to the docking station and turn on tablet by sliding the power switch up (located on lower right hand side).



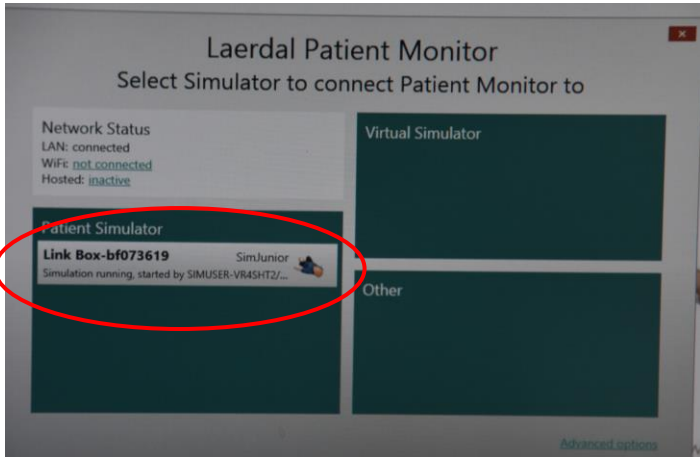
3. Swipe screen up. Enter the password which is same as username (SimUser) and is case sensitive.



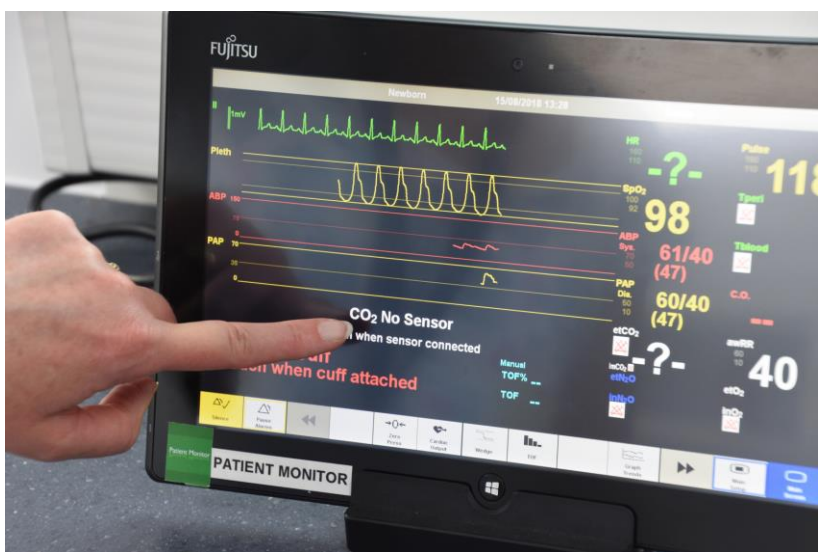
- An image of all the manikins will appear briefly then the Laerdal Simulation Home screen, select Patient Monitor box



- Laerdal Patient Monitor box will appear, click on "SimNewB" and the patient monitor will load after a couple of seconds.



- Touch each parameter to activate it.

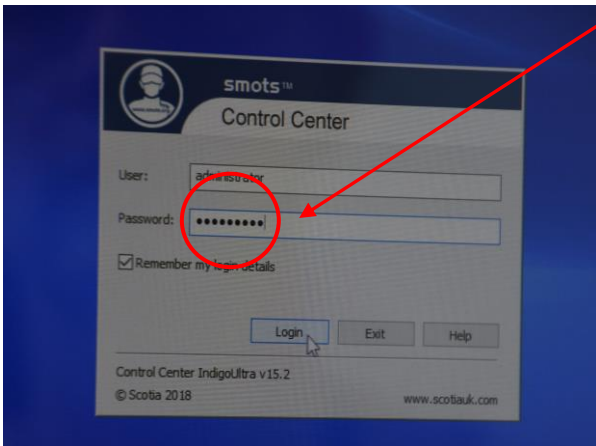


Switching on the smots™ video

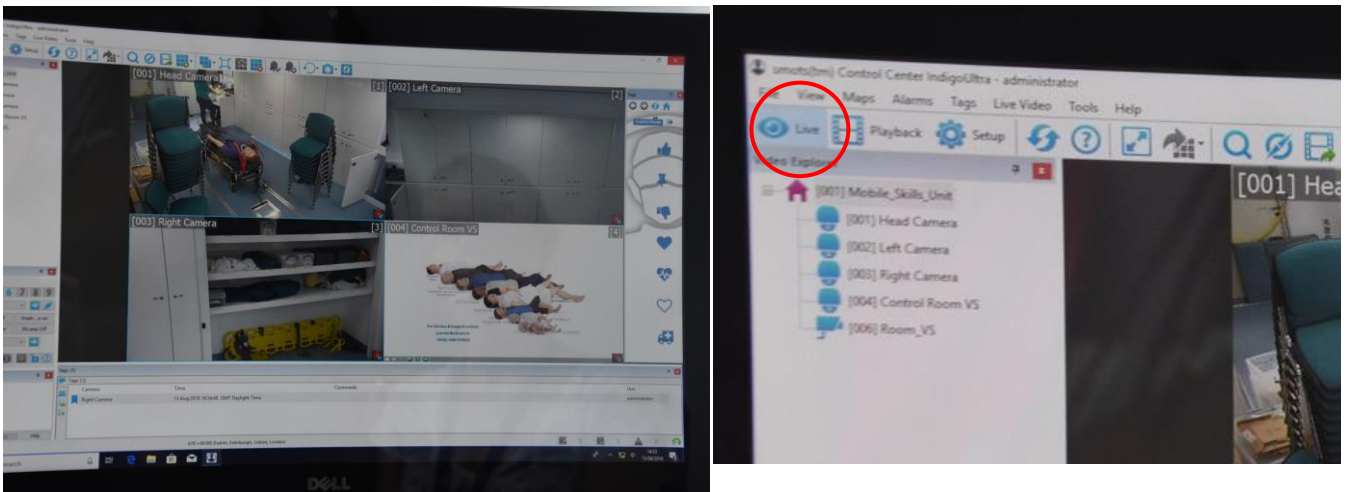
1. Switch on smots computer (right hand monitor) in Control room, the on button is located on right side of smots monitor. Double click on the smots™ icon located on the left of the screen



2. At the password screen enter in the password all in lowercase **smotsuser**

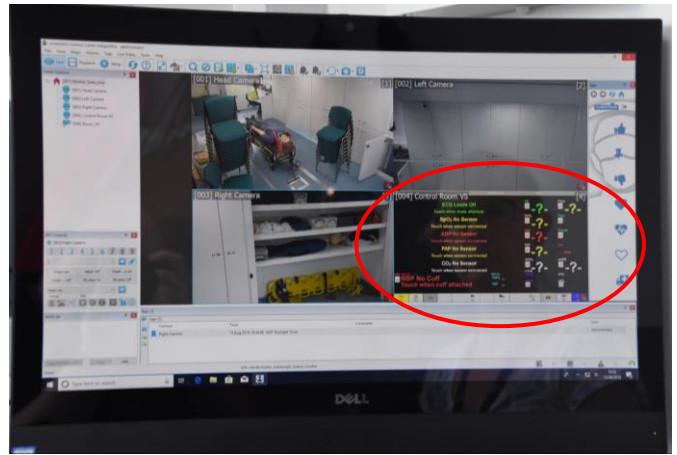
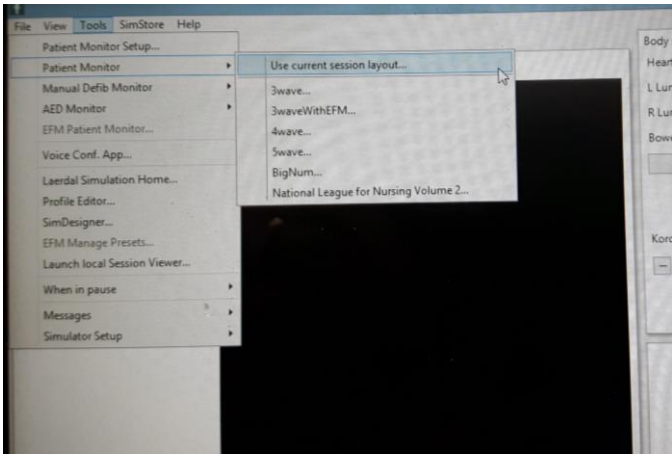


3. On the resulting screen click on the tab that shows **live video** feed (on the far left hand side at the top) and the 3 cameras should be seen and working. If the cameras are not displaying live video, click and drag the cameras across to the right.

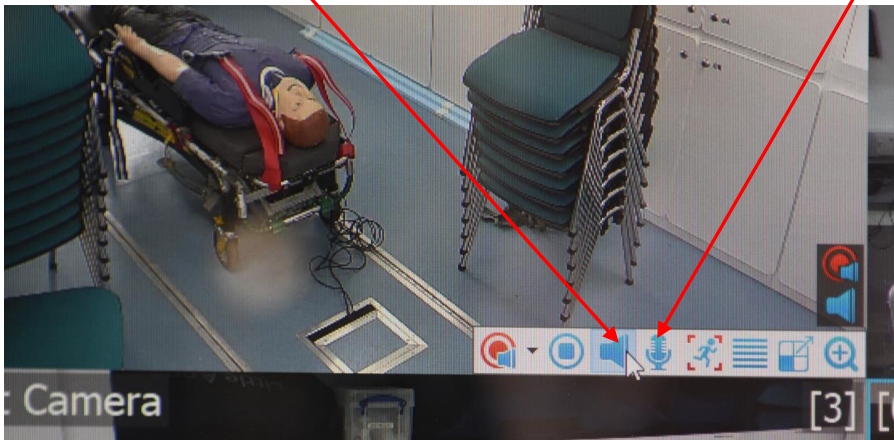


Switching on the smots™ video

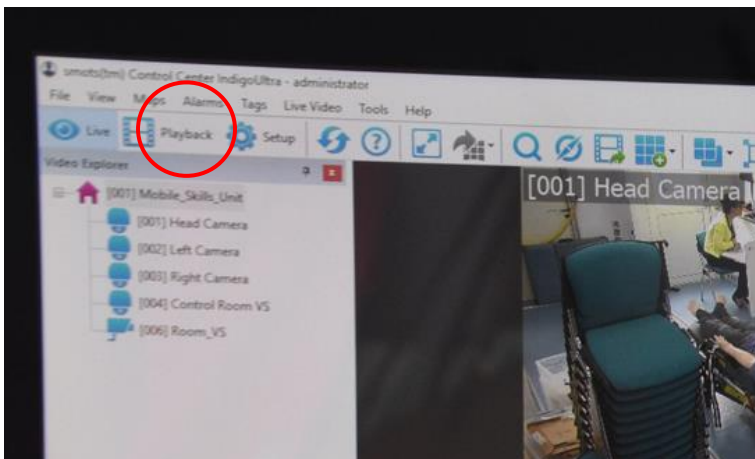
4. To ensure the Patient Monitor appears on smots go back to the Instructor PC. Click on “Tools”, select “Patient Monitor”, then select relevant layout. The vital signs will now appear on the smots screen.



5. To listen to the session in classroom put head set on, click in either the Head camera or Left camera panel and click the Audio Icon. To speak to classroom click the Microphone icon and push button on mic on desk to speak.



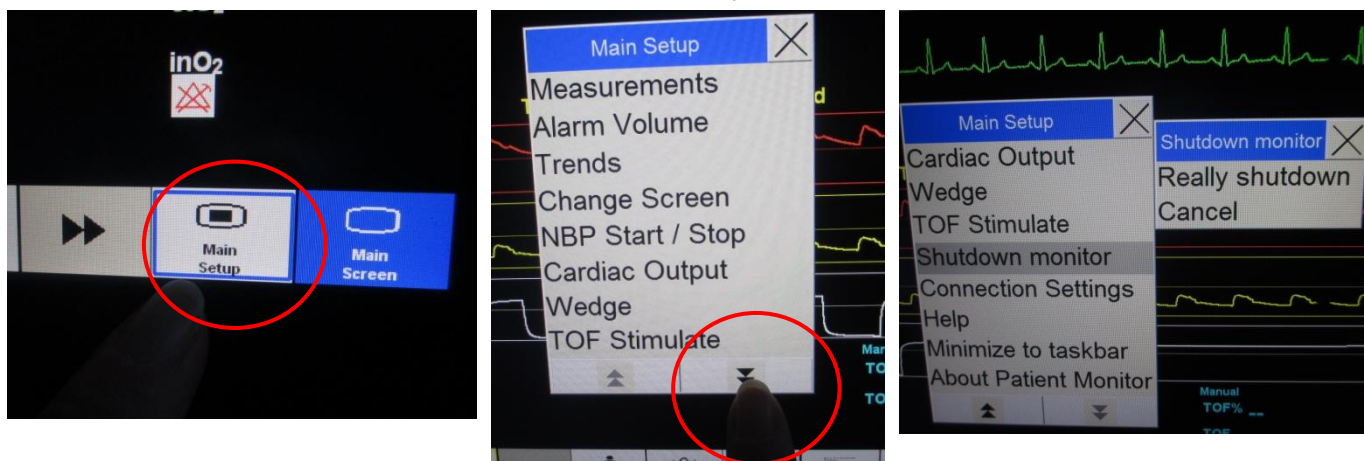
6. To view the recorded footage on smots, select “Playback” at the top left of the screen next to “Live” and click and drag the cameras across to the right.



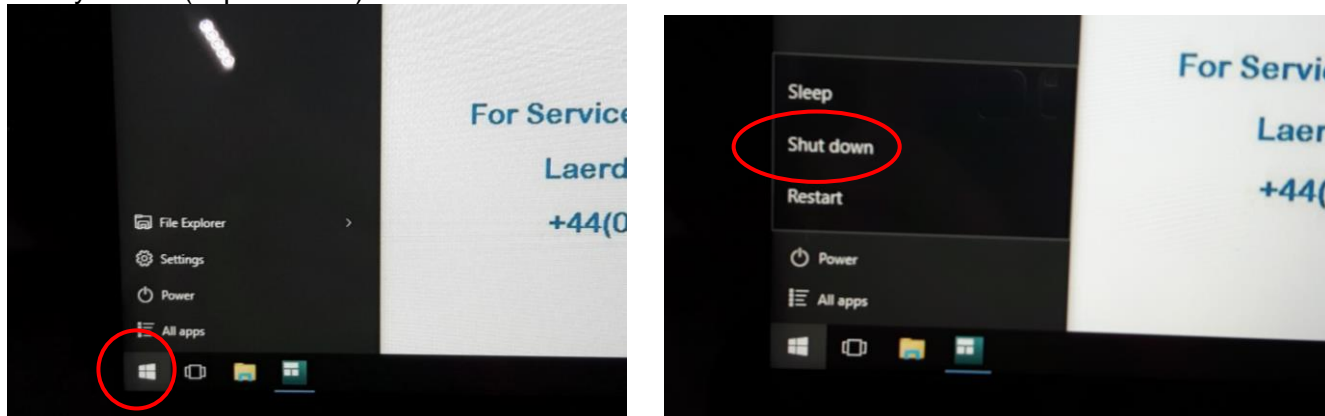
Closing down SimNewB

Once you are finished with SimNewB, firstly close down the Patient Monitor, then the Instructor PC and finally turn off the SimNewB Link box and Compressor then disconnect the SimNewB manikin.

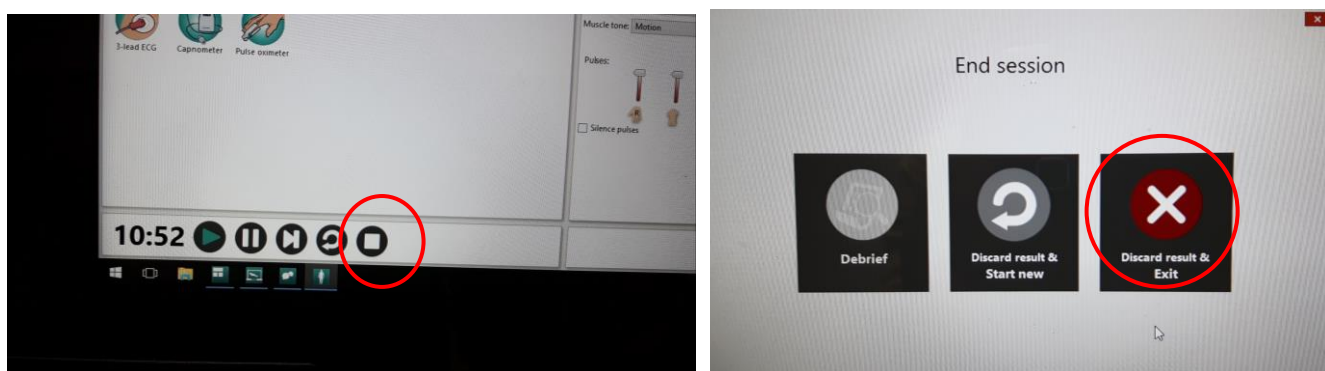
1. To turn off Patient Monitor, click Main Setup on bottom right of the screen. Click downward arrows to scroll down the list. Select Shutdown monitor then Really Shutdown.



2. Select Windows icon on bottom left hand side of screen, press Power and select Shut Down. Unplug tablet and put in protective case and place in plastic box along with docking station, power and LAN cables. Please DO NOT put docking station or power cable on top of tablet. Put box on bottom shelf in trolley locker (cupboard 14).



3. Turn off Instructor PC in control room by clicking End Session button on tool bar. Choose "Discard Result and EXIT" then "Exit LLEAP only". Shutdown ALL programmes open on the tool bar before shutting down tablet by right clicking on icons and selecting close window. Select Windows icon on bottom left hand side of screen, press Power and select Shut Down.



Closing down SimNewB

4. Switch off SimNewB's Link box and the Compressor. Disconnect Link box and Compressor cables from manikin. Unplug power cables and LAN cables from floor panel.



5. Return Compressor and cables to the bottom shelf in Cupboard 11B.



6. Return Link Box, power and LAN cables to plastic box and put on bottom shelf in Trolley Locker (Cupboard 14) Return SimNewB to its blue bag and place on middle shelf in Trolley Locker (Cupboard 14).



****Please ensure the SimNewB manikin is cleaned and free from sticky residue before returning to blue bag. Clinell Wipes can be found in cupboard 8 (beside the sink) and for stubborn stains please use the Zoff wipes located in cupboard 8.**